



# CLOTHING



# 100% RECYCLED PACKAGING & PRODUCTS

# ENVIRONMENT  
SUSTAINABILITY





**BIN LESS**

**RECYCLE MORE**



**RECYCLING YIELDS BETTER ENVIRONMENT & UNPARALLELED PRODUCTS.**

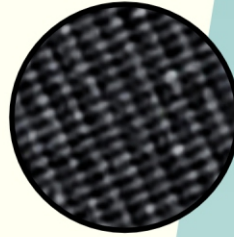
# SHORTS

## CLASSIC RUGBY SHORTS

**SPECS** → WOVEN FABRIC 100% MICRO POLYESTER, WITHOUT POCKET  
**GSM** → 200+  
**PRINTING** → TRANSFER LOGO / EMBROIDERY AS PER REQUIREMENT  
**COLOURS** → NAVY , BLACK & WHITE



**DOUBLE REINFORCED  
STITCHING**



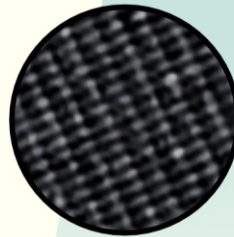
**POLYESTER  
WOOVEN FABRIC**

## PRO RUGBY SHORTS

**SPECS** → WOVEN FABRIC 100% MICRO POLYESTER, WITHOUT POCKET  
**GSM** → 200+  
**PRINTING** → TRANSFER LOGO / EMBROIDERY AS PER REQUIREMENT  
**COLOURS** → NAVY , BLACK & WHITE



**4-WAY STRETCH  
BOTTOM SIDE PANELS  
AND CROTCH**



**POLYESTER  
WOOVEN FABRIC**

## ULTIMATE RUGBY SHORTS

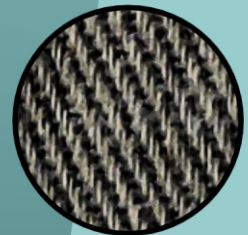
**SPECS** → 100% COTTON, WITH POCKET  
**GSM** → 280  
**PRINTING** → TRANSFER LOGO / EMBROIDERY AS PER REQUIREMENT  
**COLOURS** → NAVY , BLACK & WHITE



**BARTECH ON ALL  
KEY AREAS**



**SILICON ELASTIC  
WAIST FOR GRIPPING**



**COTTON WOVEN FABRIC**



## SOCCER SHORTS

**SPECS** → 100% MICRO POLYESTER  
**GSM** → 170+  
**PRINTING** → TRANSFER LOGO ON ONE SIDE  
**COLOURS** → NAVY , BLACK & WHITE



**SUPER SOFT FABRIC  
&  
DOUBLE REINFORCED  
STITCHING**

## LEISURE SHORTS

**SPECS** → 100% WOVEN MICRO POLYESTER  
**GSM** → 120+  
**PRINTING** → TRANSFER LOGO  
**COLOURS** → NAVY , BLACK & WHITE



**SPANDEX SIDE PANEL**



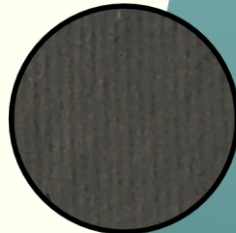
**ZIPPER SIDE POCKET**

## RUNNING & GYM SHORTS

**SPECS** → 85% POLYESTER, 15% LYCRA  
**GSM** → 210  
**PRINTING** → TRANSFER LOGO  
**COLOURS** → NAVY , BLACK & WHITE



**1 CM FLAT DRAW  
CORD**



**POLYESTER WITH  
LYCRA FABRIC**



# TRACK PANT



## COMFORT TRACK PANT

**SPECS** → WOVEN FABRIC 100% MICRO POLYESTER  
**GSM** → 120+  
**PRINTING** → TRANSFER LOGO / EMBROIDERY AS PER REQUIREMENT  
**COLOURS** → NAVY & BLACK



COMFY BOTTOMS



MESH PANEL AT THE  
BACK FOR VENTILATION



## PRO TRACK PANT

**SPECS** → BONDED FLEECE 100% MICRO POLYESTER  
**GSM** → 250+  
**PRINTING** → TRANSFER LOGO / EMBROIDERY AS PER REQUIREMENT  
**COLOURS** → NAVY & BLACK



BONDED FLEECE  
FABRIC



## ADVANCE TRACK PANT

**SPECS** → 85% POLYESTER, 15% SPANDEX  
**GSM** → 210+  
**PRINTING** → TRANSFER LOGO  
**COLOURS** → MULTICOLOR



CLASSIC  
MICROFIBRE PANT

# TRACK PANT



## PRO SKINNY PANT

SPECS → 100% MICRO POLYESTER

GSM → 180-190

PRINTING → TRANSFER LOGO / EMBROIDERY AS PER REQUIREMENT

COLOURS → NAVY & BLACK



ZIPPER ON SIDE  
POCKETS AND REAR



EXTENDED ZIP AT  
BOTTOM FOR MORE  
COMFORT



SPORTY KNIT FABRIC



## TOLEDO SKINNY PANT

SPECS → POLYTERRY 100% MICRO POLYESTER

GSM → 240+

PRINTING → TRANSFER LOGO

COLOURS → NAVY & BLACK



BREATHABLE FABRIC



EXTENDED ZIP AT  
BOTTOM FOR MORE  
COMFORT



ZIPPER ON SIDE  
POCKETS AND REAR



## COMFORT LEGGING (ULTRA STRETCH)

SPECS → 85% POLYESTER, 15% SPANDEX

GSM → 170+

PRINTING → TRANSFER LOGO / EMBROIDERY AS PER REQUIREMENT

COLOURS → NAVY, RED, & GREEN



MELANGE FABRIC



# QUARTER ZIP TOP

## ADVANCE QUARTER ZIP TOP

**SPECS** → 100% Plain Micro Polyester

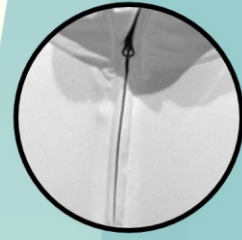
**GSM** → 240

**PRINTING** → TRANSFER LOGO / EMBROIDERY AS PER REQUIREMENT

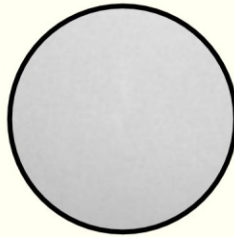
**COLOURS** → NAVY, GREY & BLACK



**DOUBLE REINFORCED STITCHING**



**COVERED ZIP FOR COMFORT**



**SUPER SOFT FABRIC**

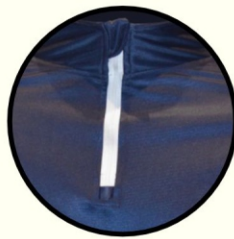
## PRO QUARTER ZIP TOP

**SPECS** → 100% MICRO POLYESTER

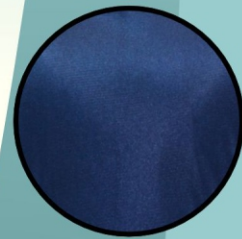
**GSM** → 225

**PRINTING** → TRANSFER LOGO & EMBROIDERY AS PER REQUIREMENT

**COLOURS** → NAVY & BLACK



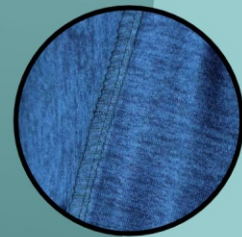
**COVERED ZIP FOR COMFORT**



**ADVANCED FABRIC TECHNOLOGY**



**HEAVY MESH ON ARM**



**DOUBLE REINFORCED STITCHING**

# QUARTER ZIP TOP

## LITE QUARTER ZIP TOP

**SPECS** → 100% Micro Polyester  
**GSM** → 180  
**PRINTING** → TRANSFER LOGO  
**COLOURS** → BLACK



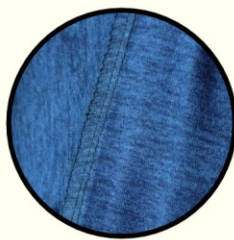
**DOT KNIT FABRIC**



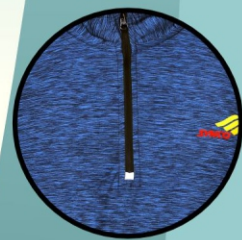
**COVERED ZIP FOR COMFORT**

## FLEX QUARTER ZIP TOP (ULTRA STRETCH)

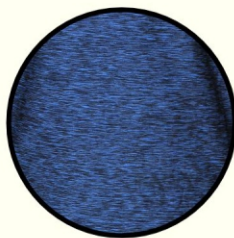
**SPECS** → 85% POLYESTER 15% SPANDEX  
**GSM** → 180+  
**PRINTING** → TRANSFER LOGO & EMBROIDERY AS PER REQUIREMENT  
**COLOURS** → NAVY, GREY & BLACK



**DOUBLE REINFORCED  
STITCHING**



**COVERED ZIP FOR COMFORT**



**ELASTICATE SPANDEX  
MILLANGE FABRIC**



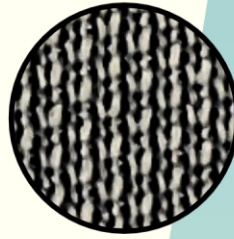
# TRACK TOP

## FLEX LITE TRACK TOP

- SPECS** → 100% MICRO POLYTERRY, FULL ZIPPER  
**GSM** → 240+  
**PRINTING** → TRANSFER LOGO / EMBROIDERY AS PER REQUIREMENT  
**COLOURS** NAVY & BLACK



COVERED ZIP FOR COMFORT



MICRO POLYESTER FABRIC

## COMFORT TRACK TOP

- SPECS** → 100% MICRO POLYESTER, WOVEN MATERIAL  
**GSM** → 120+  
**PRINTING** → TRANSFER LOGO & EMBROIDERY AS PER REQUIREMENT  
**COLOURS** → NAVY, GREY & BLACK



DOUBLE REINFORCED STITCHING  
COVERED ZIP FOR COMFORT



DRAW CORD FOR TIGHTENING



BREATHABLE LINING INSIDE



ZIPPER POCKETS

# TRACK TOP

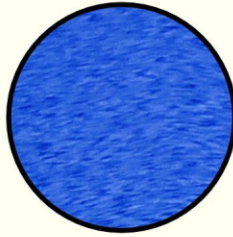
## FLEX TRACK TOP

**SPECS** → 85% POLYESTER, 15% SPANDEX

**GSM** → 180+

**PRINTING** → TRANSFER LOGO & EMBROIDERY AS PER REQUIREMENT

**COLOURS** → NAVY & BLACK



**ELASTICATE SPANDEX  
MILLANGE FABRIC**



**CONVERTED ZIP FOR COMFORT**

# JACKET

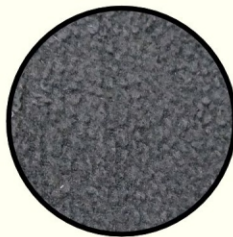
## WINTER JACKET

**SPECS** → BOUNDED FLEECE, FRONT BACK WOVEN POLYESTER  
PU COATED, INSIDE POLY FILL FOAM

**GSM** → BOUNDED FLEECE- 260, WOVEN POLYESTER PU COATED- 110

**PRINTING** → TRANSFER LOGO / EMBROIDERY AS PER REQUIREMENT

**COLOURS** → NAVY & BLACK



**BOUNDED FLEECE**



**SIDE ZIPPER POCKET**



**FORNT BACK WOVEN  
POLYESTER PU COATED**



**CONVERTED ZIP FOR COMFORT**



# TRACK SUIT



## TRACK SUIT

**SPECS** → DUAL LAYER WOVEN 100% MICRO POLYESTER

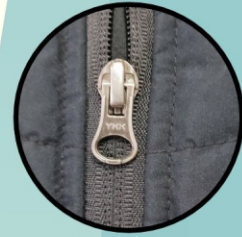
**GSM** → 200

**PRINTING** → TRANSFER LOGO / EMBROIDERY AS PER REQUIREMENT

**COLOURS** → NAVY, GREY & BLACK



**ZIPPER ON SIDE POCKETS AND REAR**



**CONVERTED ZIP FOR COMFORT**



**EXTENDED ZIP AT BOTTOM FOR MORE COMFORT**



**DOUBLE REINFORCED STITCHING**

# COMPRESSION

## COMPRESSION SET FOR MEN

**SPECS** → 85% POLYESTER, 15% SPENDEX

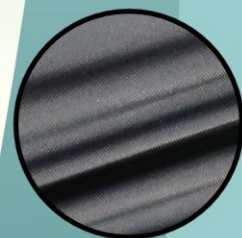
**GSM** → 200

**PRINTING** → TRANSFER LOGO

**COLOURS** → NAVY & BLACK



**REINFORCED STITCHING**



**STRETCHABLE FABRIC**



**TIGHT FITTED**

# HOODIES



## HOODIE

**SPECS** → 100% MICRO POLYESTER

**GSM** → 260+

**PRINTING** → TRANSFER LOGO / EMBROIDERY AS PER REQUIREMENT

**COLOURS** → NAVY, GREY & BLACK



**FLEECE FABRIC INSIDE FOR SUPER COMFORT**



**QUAD REINFORCED STITCHING**

# KYOTO TOP



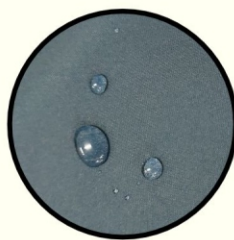
## KYOTO TOP

**SPECS** → PU COATED WIND PROOF WOVEN FABRIC

**GSM** → 110+

**PRINTING** → TRANSFER LOGO

**COLOURS** → TRANSFER LOGO / EMBROIDERY AS PER REQUIREMENT



**WIND & WATER RESISTANT**



**FULL BODY INTERNAL POCKET WITH ZIPPER FOR PERSONAL BELONGINGS TO KEEP THEM DRY**



**FLEXI - COMFORT NECK**



**ADJUSTABLE DRAW CORD FOR TIGHTENING**



# T-SHIRT

## DUAL CREW NECK T-SHIRT

SPECS → 60% POLYESTER, 40% COTTON

GSM → 210

PRINTING → TRANSFER LOGO / EMBROIDERY AS PER REQUIREMENT

COLOURS → NAVY & BLACK



COLLOR BATON  
AVAILABLE



DUAL COLOUR OPTION

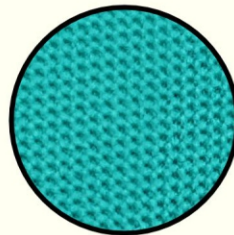
## UNI COLOURED POLO T-SHIRT

SPECS → 100% MICRO POLYESTER

GSM → 170-180

PRINTING → TRANSFER LOGO / EMBROIDERY AS PER REQUIREMENT

COLOURS → NAVY, ORANGE, YELLOW, WHITE, TURQUOISE BLUE, PURPLE PEACH, OLIVE GREEN, SKY BLUE & BLACK



DOT KNIT FABRIC

## ADVANCE POLO/APOLO T-SHIRT

SPECS → 100% MICRO POLYESTER

GSM → 180

PRINTING → TRANSFER LOGO

COLOURS → NAVY & BLACK



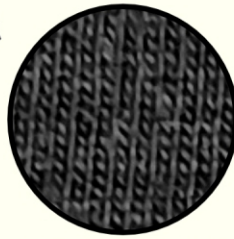
DOT KNIT FABRIC

# T-SHIRT



## PRO CREW NECK T-SHIRT

- SPECS → 60% COTTON, 40% POLYESTER
- GSM → 215
- PRINTING → TRANSFER LOGO / EMBROIDERY AS PER REQUIREMENT
- COLOURS → NAVY & BLACK

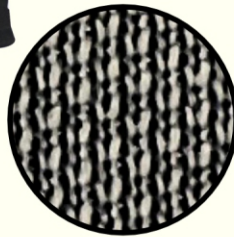


COTTON POLYESTER  
FABRIC



## COMFORT CREW NECK T-SHIRT

- SPECS → 100% MICRO POLYESTER (SUGAR KNIT)
- GSM → 230
- PRINTING → TRANSFER LOGO / EMBROIDERY AS PER REQUIREMENT
- COLOURS → NAVY & BLACK

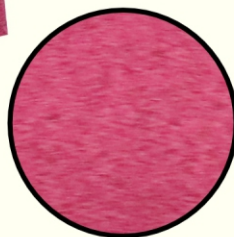


SUGAR KNIT FABRIC



## FLEX CREW NECK T-SHIRT

- SPECS → 85% POLYESTER, 15% SPANDEX
- GSM → 180
- PRINTING → TRANSFER LOGO
- COLOURS → NAVY, SEA GREEN, & PINK



MILANGE FABRIC



# 8185



**Regular Mesh**  
Gsm 80-90



**Dual Wall Mesh**  
Gsm 85-95



**Micro Fibre Light**  
Gsm 110-120



**Fine Mesh**  
Gsm 85-100



**Honeycomb Mesh**  
Gsm 160-170



**Cellular Poly**  
Gsm 110-120



**Micro Poly**  
Gsm 160-170



**Netball Bib**  
Gsm 160-170



**Matt Plain**  
Gsm 115-130



**Coaches Bibs**  
Gsm 85-95

**Available in Single &  
Reversible options**





**TEAM SYNDICATE : DRIVING #1 SPORTS COMPANY OF INDIA**



**SPORTING SYNDICATE INTERNATIONAL PVT. LTD.**  
 Kapurthala Main Highway Road Jalandhar  
 144021 - PUNJAB (INDIA)  
 Tele :- 0181-2650266-2650366 Mob :- +91 9988882003  
 www.sportsgoodsindia.com www.sportsgoodsindia.com  
 e-mail : alakesh@sportsgoodsindia.com

